



# SMART RACK

CO<sub>2</sub> COMPACT COMPRESSOR RACK

COMPACT COMPRESSOR RACK EQUIPPED FOR THE GENERATION OF COLD WITH CO<sub>2</sub> IN THE TRANSCRITICAL CYCLE. IT SERVES REFRIGERATION SERVICES IN ONE OR TWO TEMPERATURES, WORKING AS A BOOSTER. OPTIONALLY IT CAN INCLUDE UP TO 1 EXCHANGER AND 1 PARALLEL COMPRESSOR.



Range of cooling capacities from **40 up to 120 kW**

Retail solution from **400 to 1500 m<sup>2</sup>**

- ✓ Horizontal liquid receiver: 92/120/160 lit.
- ✓ Tubular frame.
- ✓ Electrical panel located above the compressors.
- ✓ Oil separator accumulator.
- ✓ Up to 5 compressors.
- ✓ Easy commissioning and maintenance: all connections from the same side of the unit.
- ✓ Reduced width of 790 mm design to pass through every standard doorway.
- ✓ Copper connections.
- ✓ **Capacity 115 kW (MT)**
- ✓ **Booster: up to 90 kW (MT) + 25 kW (LT)**



## MAIN FEATURES



- Compact design.
- Simplicity.
- Flexible design.



Selectable electronics brand.

## OPTIONALS

- ✓ RHX (Recovery Heat Exchanger).
- ✓ IHX (Internal Heat Exchanger).
- ✓ Safety valve manifold.
- ✓ Double high pressure and gas bypass valves.
- ✓ Emergency unit on board.
- ✓ Desuperheater on board.
- ✓ Inverter LT.
- ✓ 10" touchpad Tewis Machine Supervisor (TMS)
- ✓ Parallel compressor.
- ✓ Coming soon: Dorin compressors.



# SMART RACK

CO<sub>2</sub> COMPACT COMPRESSOR RACK

## FEATURES

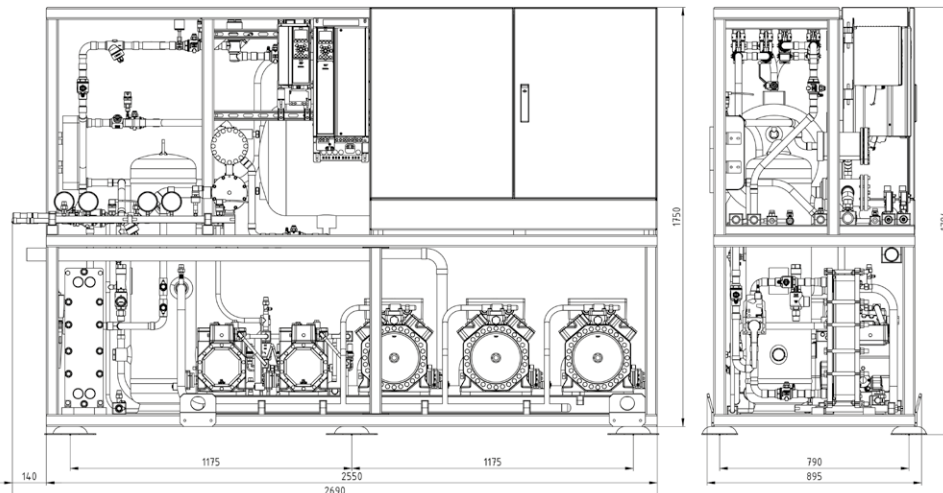
- Oil separator accumulator.
- 92/120/160 l liquid receiver, with internal exchanger for connection to emergency unit.
- Two electronic refrigerant level sensors (high and low levels).
- Frequency inverter for the first MT compressor and optional for the LT compressor.
- Selectable electronics brand: Tewis (EWCM9000pro), Danfoss (AK-PC 772) or Carel (pRack PR300T).
- All copper connections.
- Design pressures:
  - MP (MT suction) : 52 bar.
  - LP (LT suction) : 30 bar.
  - IP (Container and liquid line) : 70 bar.
  - HP (Discharge): 120 bar.

## MODELS & DATA

BASE CODE	APPLIC.	CAPAC. KW MT* 70 HZ	CAPAC. KW LT* 70 HZ	MT COMPRESSORS	PARALLEL COMPR.	LT COMPRESSORS
<b>GSR2FJ_093YBX</b>	MT	89,34	--	1 x 4JTC-15K (V.F.) + 2 x 4JTC-15K	1 x 4MTC-10K	---
<b>GSR2FJ_041YBX</b>	MT	110,45	--	1 x 4HTC-20K (V.F.) + 1 x 4FTC-20K	1 x 4JTC-15K	---
<b>TSR2EJ_585YBX</b>	MT+LT	36,84	5,79	1 x 4JTC-15K (V.F.) + 1 x 4JTC-15K	---	1 x 2KSL-1K
<b>TSR2FJ_092YBX</b>	MT+LT	62,13	5,79	1 x 4HTC-20K (V.F.) + 1 x 4FTC-20K	---	1 x 2KSL-1K
<b>TSR2FJ_086YBX</b>	MT+LT	72,51	5,79	1 x 4HTC-20K (V.F.) + 2 x 4HTC-20K	---	1 x 2KSL-1K
<b>TSR2FJ_089YBX</b>	MT+LT	78,92	6,48	1 x 4HTC-20K (V.F.) + 1 x 4HTC-20K	1 x 4MTC-10K	1 x 2KSL-1K
<b>TSR2FJ_439YBX</b>	MT+LT	66,98	10,46	1 x 4HTC-20K (V.F.) + 1 x 4HTC-20K		1 x 2KSL-1K + 1 x 2KSL-1K
<b>TSR2FJ_090YBX</b>	MT+LT	64,89	12,7	1 x 4JTC-15K (V.F.) + 1 x 4HTC-20K	1 x 4MTC-10K	1 x 2GSL-3K
<b>TSR2FJ_490YBX</b>	MT+LT	57,85	14,16	1 x 4JTC-15K (V.F.) + 1 x 4JTC-15K	1 x 4MTC-10K	1 x 2JSL-2K + 1 x 2JSL-2K
<b>TSR2FJ_489YBX</b>	MT+LT	71,20	14,16	1 x 4HTC-20K (V.F.) + 1 x 4HTC-20K	1 x 4MTC-10K	1 x 2JSL-2K + 1 x 2JSL-2K
<b>TSR2EJ_112YBX</b>	MT+LT	20,47	18,5	1 x 4JTC-15K (V.F.) + 1 x 4JTC-15K	---	1 x 2HSL-3K + 1 x 2HSL-3K
<b>TSR2FJ_128YBX</b>	MT+LT	45,77	18,5	1 x 4HTC-20K (V.F.) + 1 x 4FTC-20K	---	1 x 2HSL-3K + 1 x 2HSL-3K
<b>TSR2FJ_364YBX</b>	MT+LT	80,75	18,5	1 x 4HTC-20K (V.F.) + 2 x 4FTC-20K	---	2 x 2HSL-3K
<b>TSR2EJ_893YBX</b>	MT+LT	22,5	21,06	1 x 4JTC-15K (V.F.) + 1 x 4HTC-20K	---	1 x 2GSL-3K + 1 x 2GSL-3K
<b>TSR2FJ_193YBX</b>	MT+LT	77,73	21,06	1 x 4HTC-20K (V.F.) + 2 x 4FTC-20K	---	1 x 2GSL-3K + 1 x 2GSL-3K
<b>TSR2EJ_895YBX</b>	MT+LT	22,81	28,07	1 x 4HTC-20K (V.F.) + 1 x 4HTC-20K	---	1 x 2FSL-4K + 1 x 2FSL-4K
<b>TSR2FJ_444YBX</b>	MT+LT	38,18	28,07	1 x 4JTC-15K (V.F.) + 2 x 4HTC-20K	---	1 x 2FSL-4K + 1 x 2FSL-4K
<b>TSR2FJ_088YBX</b>	MT+LT	69,43	28,07	1 x 4HTC-20K (V.F.) + 2 x 4FTC-20K	---	1 x 2FSL-4K + 1 x 2FSL-4K

\*Calculation conditions: Tev MT -8°C, Tev LT -32°C, Tsgc +35°C.

## DIMENSIONS



Two different frame sizes available:

- ✓ 4 compressors: length 1900 mm
- ✓ 5 compressors: length 2550 mm

FCT\_SMARTRACK\_ENV1